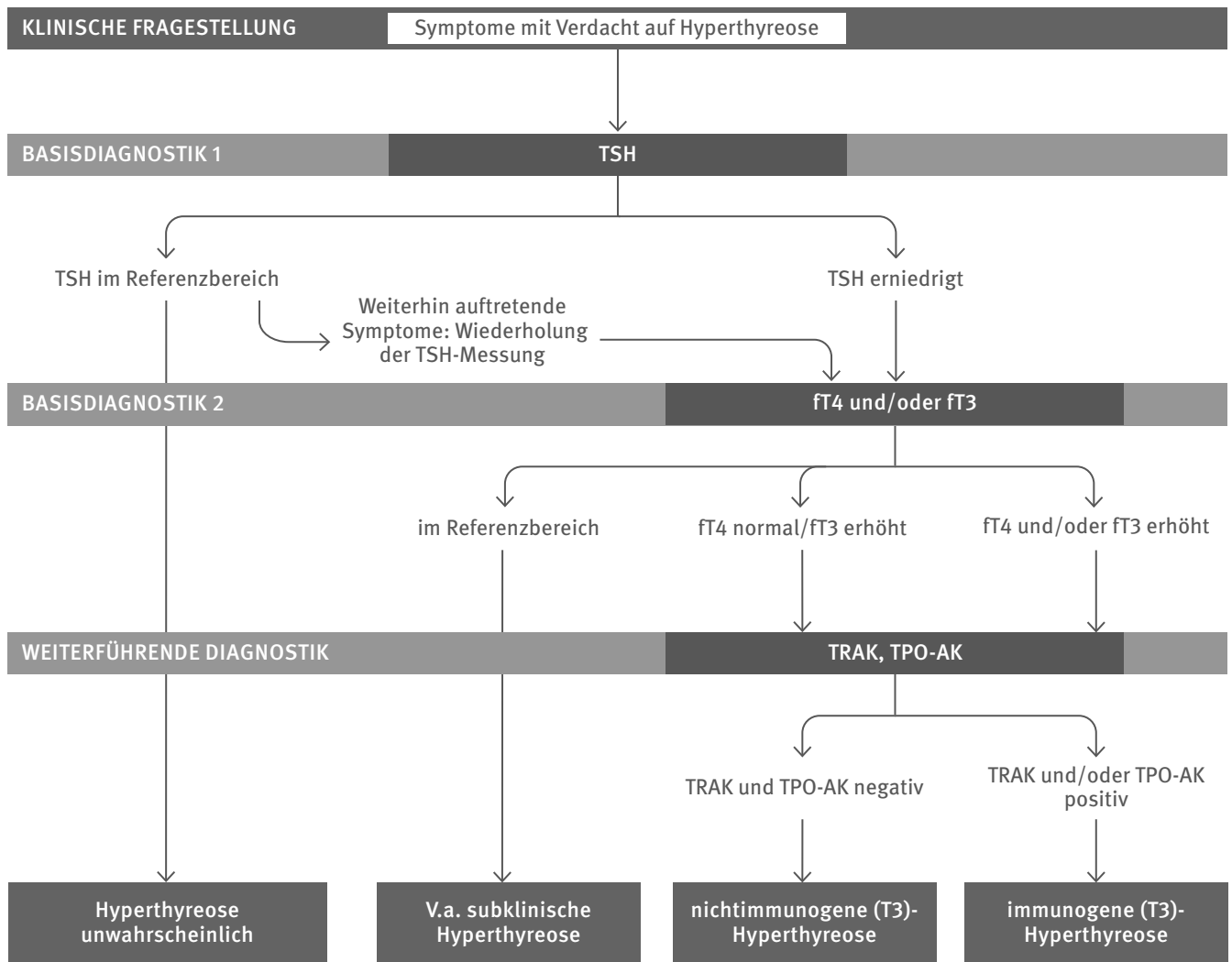


ABLAUFSHEMA: LABORDIAGNOSTIK DER HYPERTHYREOSE



TSH = Thyreoidea-stimulierendes Hormon, ft4 = freies Thyroxin, ft3 = freies Trijodthyronin, TPO = Thyreoperoxidase, AK = Antikörper, TRAK = TSH-Rezeptor-Antikörper, V.a. = Verdacht auf